

WHAT PCE MEANS TO ME

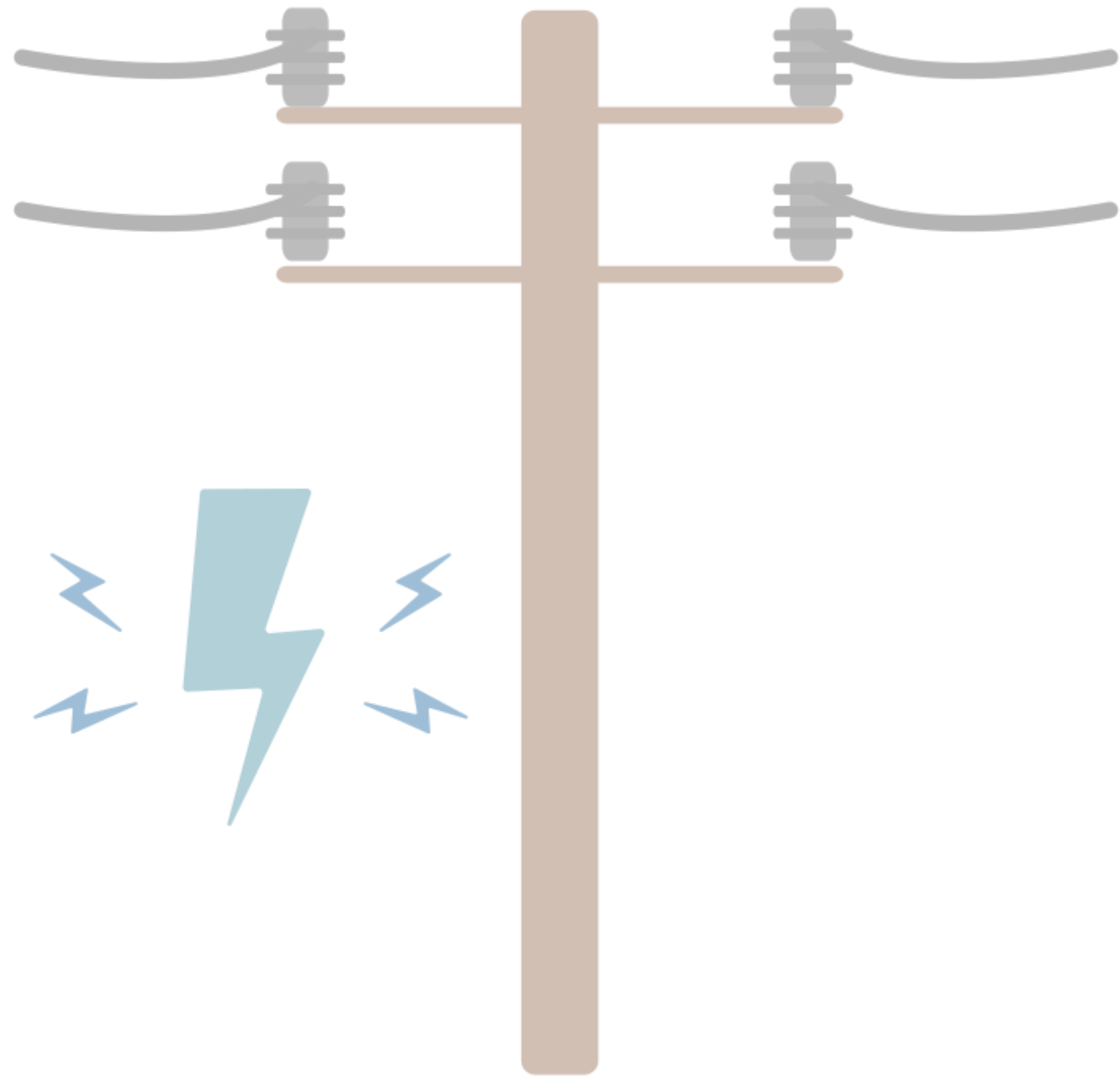
“No way around it, power production and maintenance in small, isolated communities is expensive. The PCE Program funds maintenance and helps protect the community and State’s investment in rural power infrastructure.”

Connie, UMA



AVERAGE RURAL ELECTRIC BILLS

WITH & WITHOUT PCE

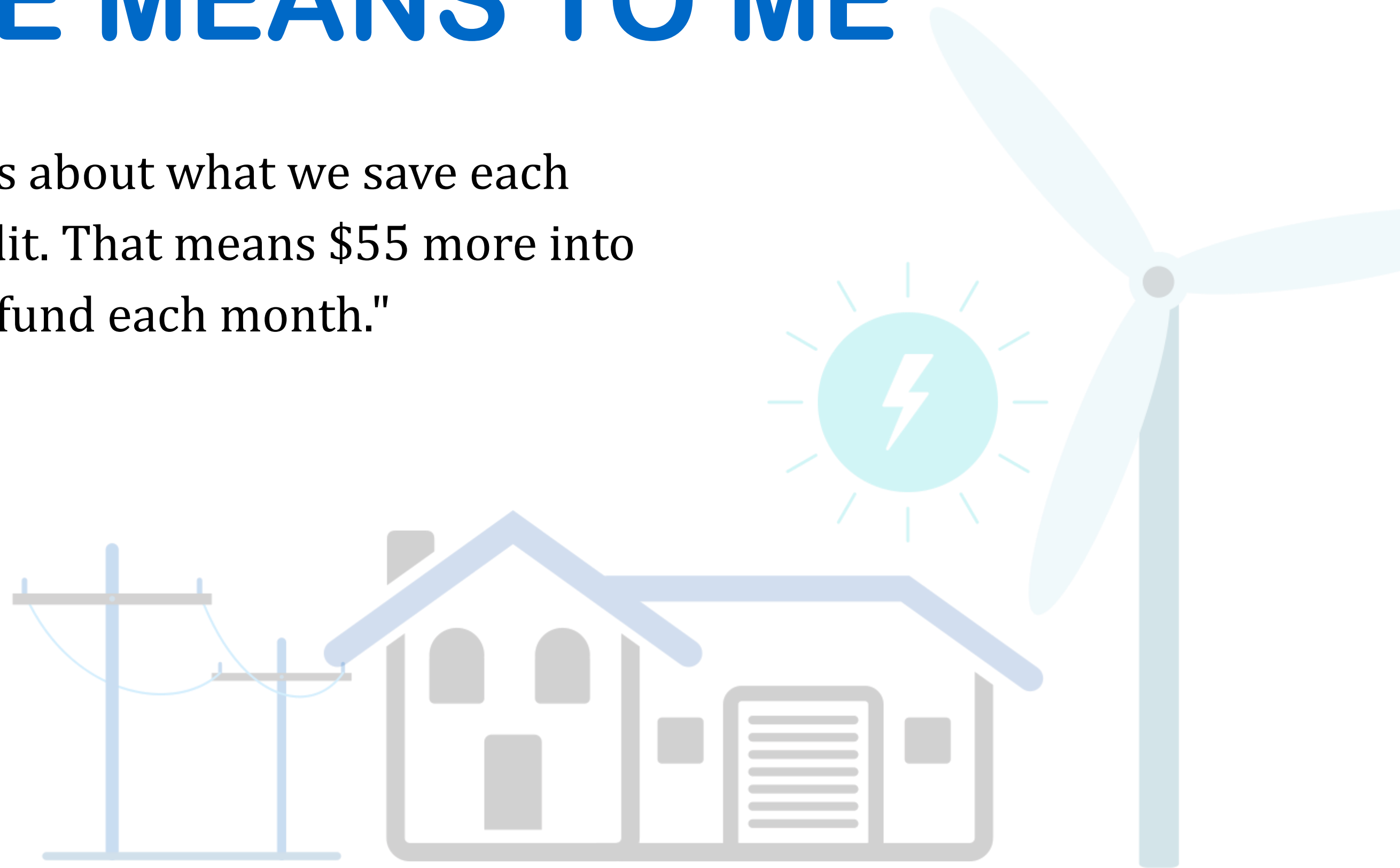


VILLAGE	WITH PCE	W/OUT PCE
CHIGNIK	\$40	\$88
AKUTAN	\$57	\$303
BETHEL	\$87	\$121
DILLINGHAM	\$80	\$134

WHAT PCE MEANS TO ME

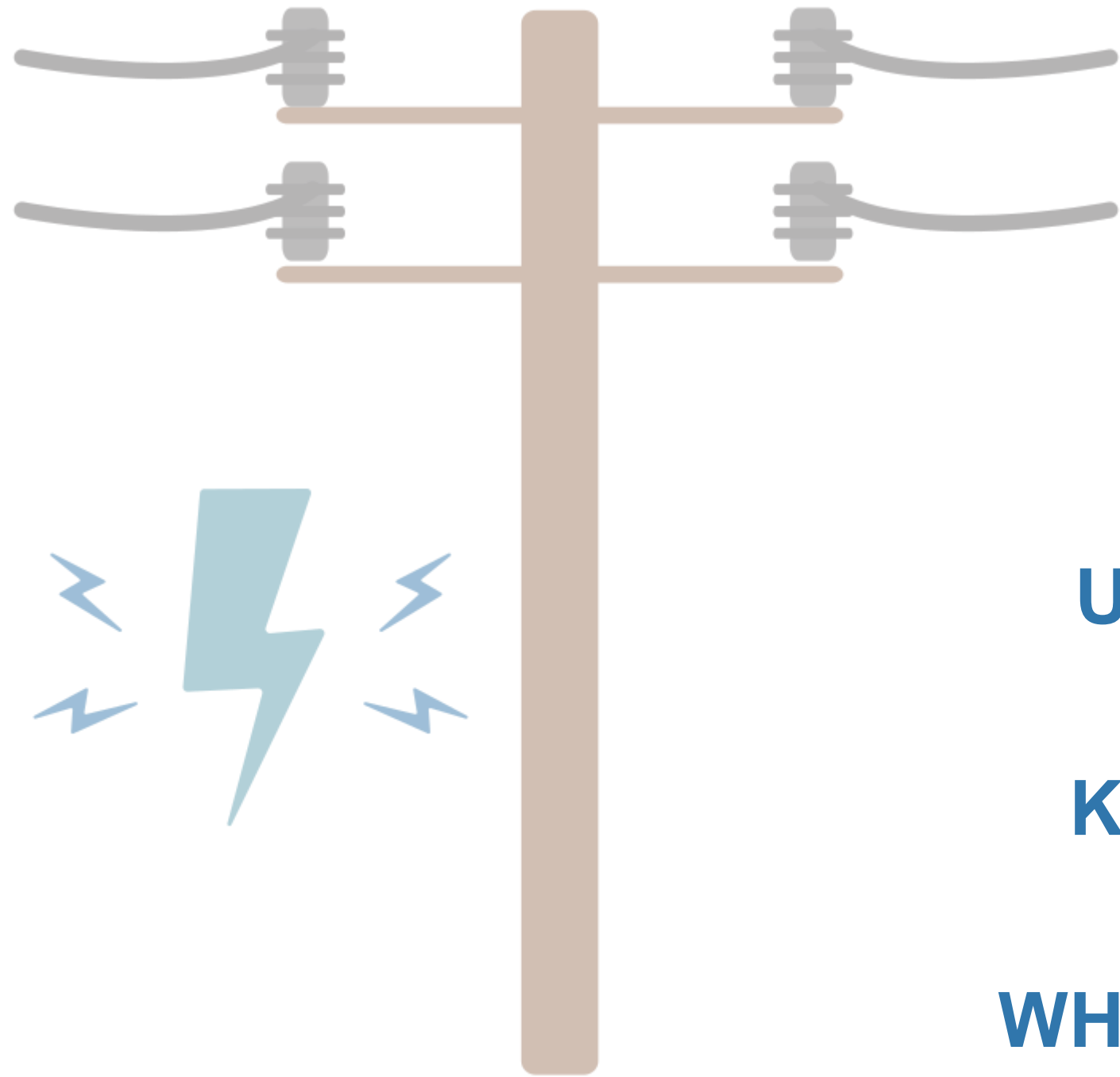
"\$55 PER MONTH - that's about what we save each month with the PCE credit. That means \$55 more into my kids' college savings fund each month."

Amanda, Nome




AVERAGE RURAL ELECTRIC BILLS

WITH & WITHOUT PCE



VILLAGE	WITH PCE	W/OUT PCE
NAKNEK	\$45	\$129
UNALAKLEET	\$88	\$138
KONGIGANAK	\$115	\$226
WHITE MOUNTAIN	\$87	\$166

WHAT PCE LOOKS LIKE ON AN ELECTRIC BILL


NOME JOINT UTILITY SYSTEM
 P.O. Box 70 • Nome, AK 99762-0070
 Phone (907) 443-6587 • www.njus.org

NJUS Customer Service Office - Direct Phone (907) 443-6310
 BSNL Building - 112 Front St., Suite 110 - 12 noon - 4:30pm
"Providing reliable utility services to system rate payers efficiently and economically by prudently operating and maintaining system assets in a fiscally responsible manner"

ACCOUNT NUMBER: 55070
 STATEMENT DATE: MARCH 31, 2019
 DUE DATE: APRIL 25, 2019
 AMOUNT DUE: 143.11
 PAID BY BANK

JAN P TOERDAL
 ACCOUNT NUMBER: 55070
 STATEMENT DATE: 03/31/19

PREVIOUS BALANCE: 187.78
 PAYMENT (S) - THANK YOU: 187.78CR
 CURRENT CHARGES: 143.11
 AMOUNT DUE: 143.11

Only payments received by us by 3/26 reflect on this statement. Monthly bills are due in full by the 25th day of the month.

METER / SERVICE DESCRIPTION	PREVIOUS READING	CURRENT READING	MULTIPLIER	DAYS / USAGE	CHARGE
ELECTRIC 54000033	02/15/19	03/15/19		28 DAYS	
ELECTRICITY	028021	028467		446	117.01
PCE - PAID BY STATE OF AK					58.16CR
GENERATOR FUEL SURCHARGE					62.17
CITY LANDFILL MAINT FEE					12.50
TAX					9.59
					143.11 *

Those eligible for NSEDC energy subsidy will be credited on next statement.
 Utility's fuel efficiency for February 2019: 20.12 kilowatt-hours/gallon

METER / SERVICE DESCRIPTION	PREVIOUS READING	CURRENT READING	MULTIPLIER	DAYS / USAGE	CHARGE
ELECTRIC 54000033	02/15/19	03/15/19		28 DAYS	
ELECTRICITY	028021	028467		446	117.01
PCE - PAID BY STATE OF AK					58.16CR
GENERATOR FUEL SURCHARGE					62.17
CITY LANDFILL MAINT FEE					12.50
TAX					9.59
TOTAL FOR:					143.11 *

AVERAGE RURAL ELECTRIC BILLS

WITH & WITHOUT PCE



VILLAGE

WITH PCE

W/OUT PCE

NOME

\$66

\$87

HUGHES

\$51

\$201

KOTZEBUE

\$56

\$107

BUCKLAND

\$133

\$184