



EVOLVE NATIONAL WEATHER SERVICE ALASKA

NOAA/NWS Alaska Region

Alaska Tribal Conference on Environmental Management
Anchorage, Alaska November 14, 2017



Presentation Outline

1. What have we been up to?
2. Where are we going?

National Weather Service Timeline

Early
1900s til
1950s

- Emphasis on manual observations
- Some forecasts, aviation focus

1960s to
1990s

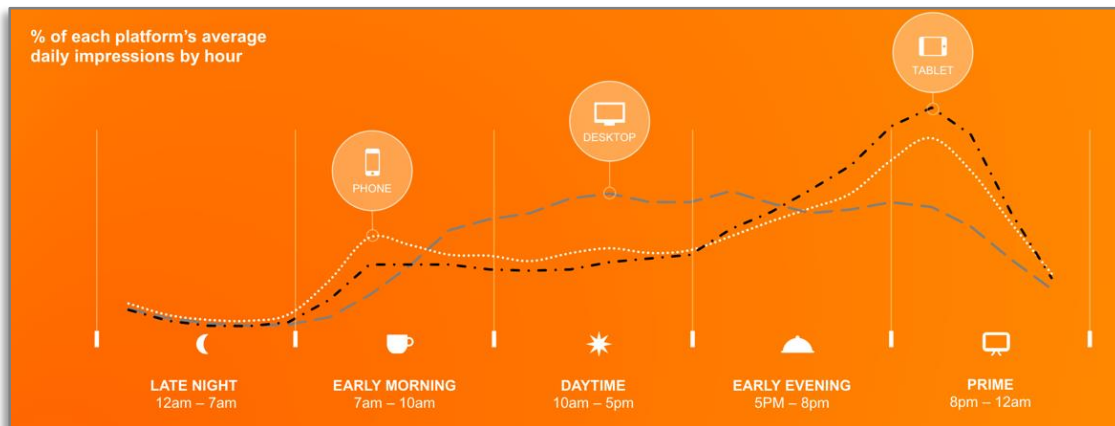
- Transition to some automation, expanded text forecasts including warnings

2000s to
now

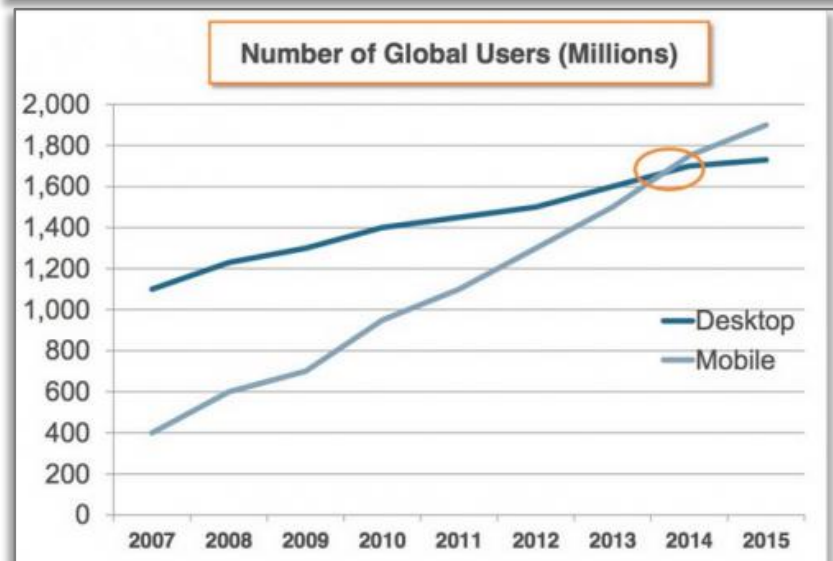
- Automation expanded, transition towards more actionable products and services (work in progress)



How to Keep up with Change....

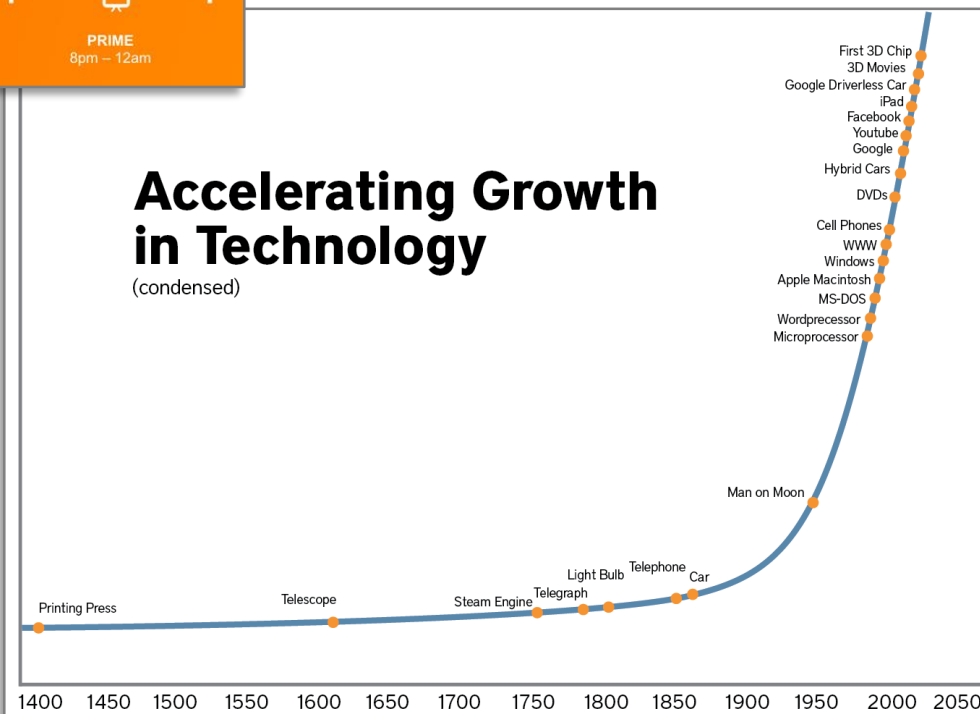


We'll focus on relevancy, interpretation, and integration through partnerships



Accelerating Growth in Technology

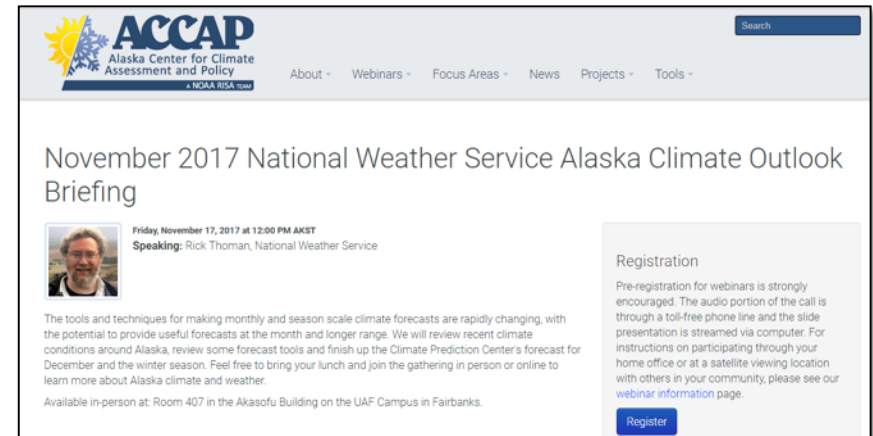
(condensed)



Source: comScore Mobile Metrix

New/Expanded State Wide Services

- Climate Science and Services
 - Provide long lead time forecast products and services specifically for Alaskan not previously available.
 - Put recent and forecasting information in context with the historical record.



- Regional Operations Center
 - Coordinates between the NWS offices and tribal, state and federal partners to improve messaging and relevancy of services during big storms

Multi-media Impact Based Decision Support Services

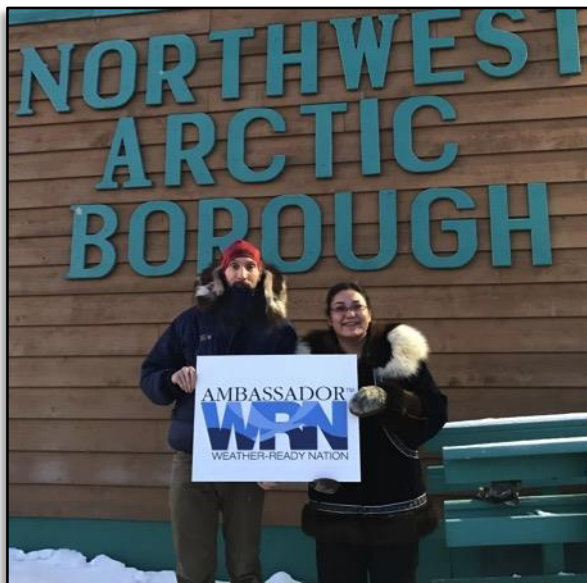


Expansion of Services:
Weather segments locally produced at NWS facility in Anchorage for broadcast on Public Television, YouTube, and other social media platforms.

Greater partnerships producing educational and outreach segments for Public Television.

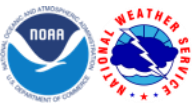


Weather Ready Nation (WRN) Ambassador Program



Ambassador initiative helps unify the efforts across government, non-profits, academia, and private industry toward making the nation more ready, responsive, and resilient against extreme environmental hazards.

47 Ambassadors in Alaska with 18 added in 2017 (first in 2015).



Expansion of Observations to Support Villages and Management of Ecosystems



NWS Alaska partnership with the National Ocean Service (NOS) brings tidal and storm surge observations to Unalakleet and Tununak.

NWS develops and installs iGage, a rapidly deployable, low-cost instrument that provides real-time river level data to Alaska.

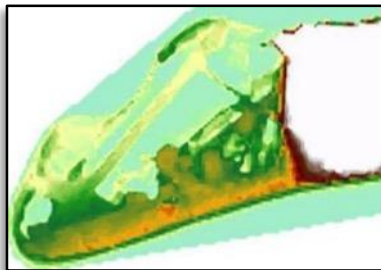


Colored Indexed Elevation Maps for Flood Vulnerable Coastal Communities

Mapping, through partnerships, to aid in communicating flooding threats in relatable ways.



+



+



=

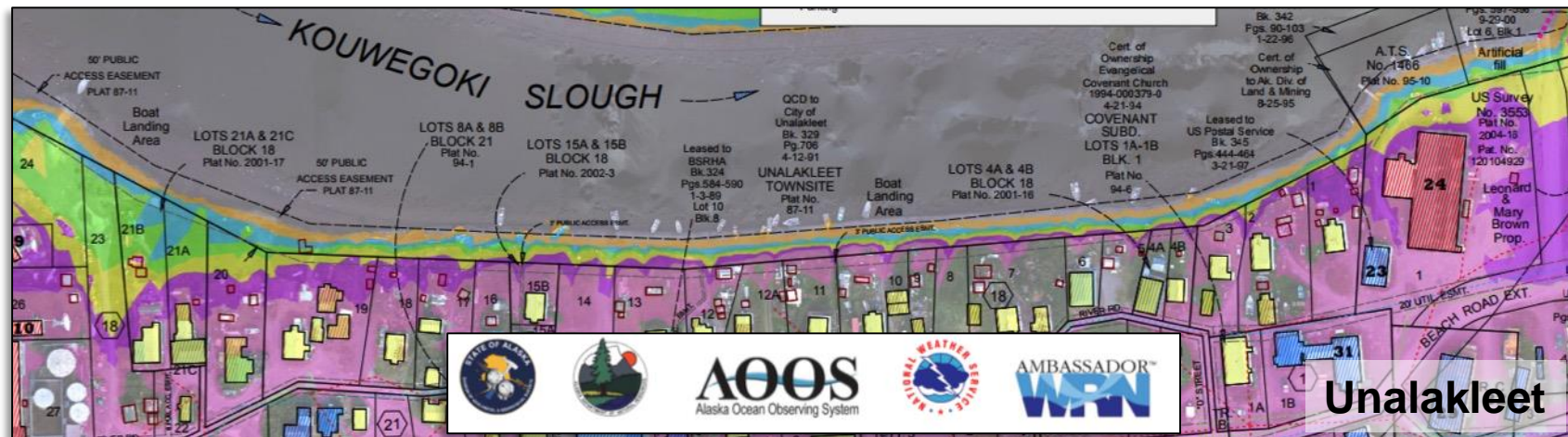


Community Maps

Best Elevation Data

Location of Infrastructure

Colored Index Maps



Greater Focus on Local Workshops to Develop Partnerships and Ensure Integrated and Relevant Services



- Interacted with individuals from more than 100 communities across Alaska Region in 2017 through participation in local and state workshops and visits to villages.



Do more by establishing the Alaska Environmental Science & Services Integration Center

- Shift resources to focus on relevant and integrated, state-wide decision support services and improve consistency of services across the NWS Alaska Region
 - Including Regional Operations Center, Multi-media dissemination, Sea Ice Program, Long Lead Prediction
- Place a much greater emphasis on partnerships and delivery of more fully integrated environmental information across the government, including with state and tribal entities.
 - Examples: weather and climate impact based decision support for harmful algal blooms and fish stocks/runs.



Thanks

- For additional information please contact:

Rick Thoman

National Weather Service Alaska Region

Climate Science and Services Manager

907-458-3716

richard.thoman@noaa.gov